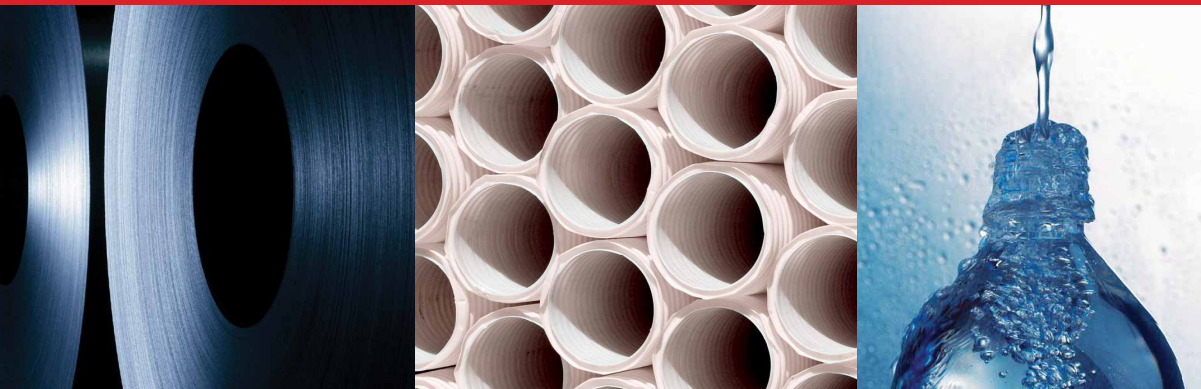


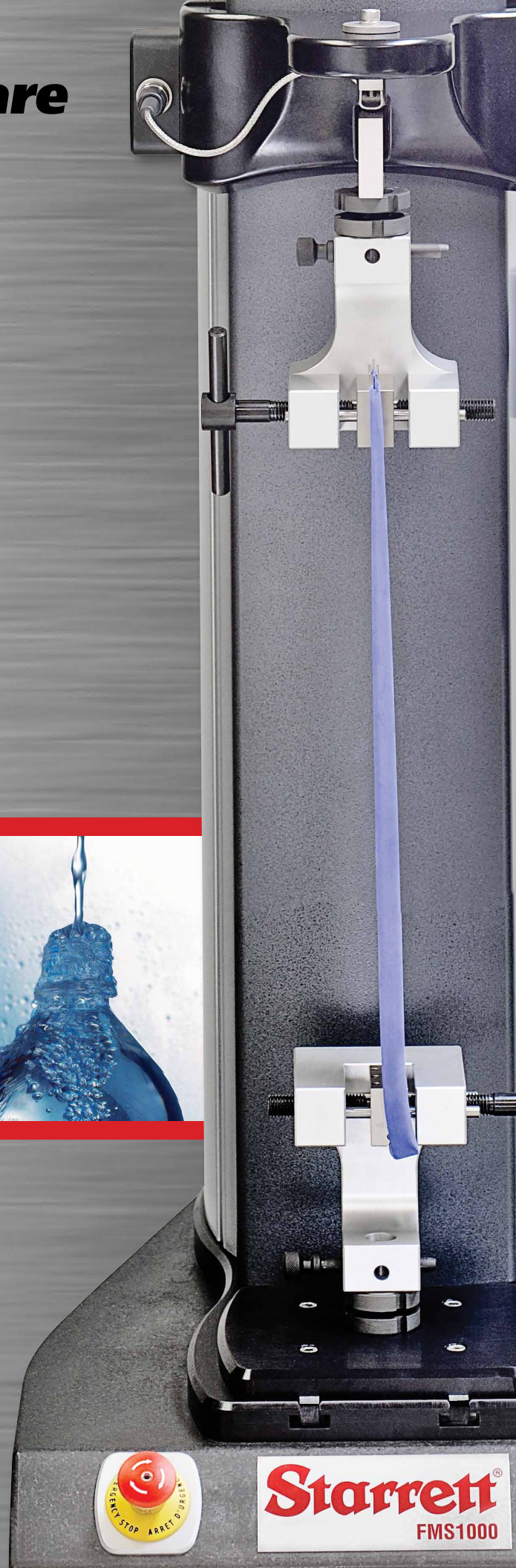
L2 Plus Series Software for Advanced Force Measurement

Data Management



Starrett®

The Better Solution



Starrett®
FMS1000



Table of Contents		Page
6.0	DATA MANAGEMENT	4
6.1	Post Test Setup	4
6.1.1	Export Raw Data	4
6.1.2	Export Results	6
6.2	File Locations	7
6.2.1	Metlogix Directory	7
6.2.2	Runs Directory	7
6.2.3	Archive Directory	8
6.2.4	Exports Directory	10
6.3	Exporting Data and Results	10
6.3.1	Automatic Export	11
6.3.2	On-Demand Export (Share)	11
6.3.2.1	Export Results	12
6.3.2.2	Export to Clipboard	12
6.3.2.3	Export Image	12
6.3.2.4	Export Raw Data	12

Table of Contents		Page
6.4	Printouts	13
6.4.1	Standard Reports	14
6.4.1.1	Graph Report	14
6.4.1.2	Run Report	15
6.4.1.3	Batch Report	17
6.4.1.4	Statistics Report	18
6.4.1.5	Tolerance Report	19
6.4.2	Automatic Printouts	20
6.4.3	On-demand Printouts	21
6.4.4	Printout Settings	21
6.4.4.1	Print Report Header	21
6.4.4.2	Print Column Headers	21
6.4.4.3	Print Grid lines	21
6.4.4.4	Print Header Logo	21
6.4.4.5	Print Footer Logo	22
6.4.4.6	Print User Name in Header	22
6.4.4.7	Print Date/Time in Header	22
6.4.4.8	Print Page Number in Footer	22
6.4.4.9	Print Custom Text in Header	22
6.4.4.10	Print Custom Text in Footer	22

6.0 Data Management

Data management is the collecting and saving of data from your test runs and the reporting of result using printouts.

L2 Plus Series software is designed to allow data to be managed easily. Files of raw data from a test run or files of your results are saved in a .csv format. This makes it easy to convert into Microsoft® Excel®, Word® or Access® for advanced data management and reporting, and the ability to interface your data and result into 3rd-party statistical process control applications.

L2 Plus Series systems can save up to 100,000 rows of data for a test run.

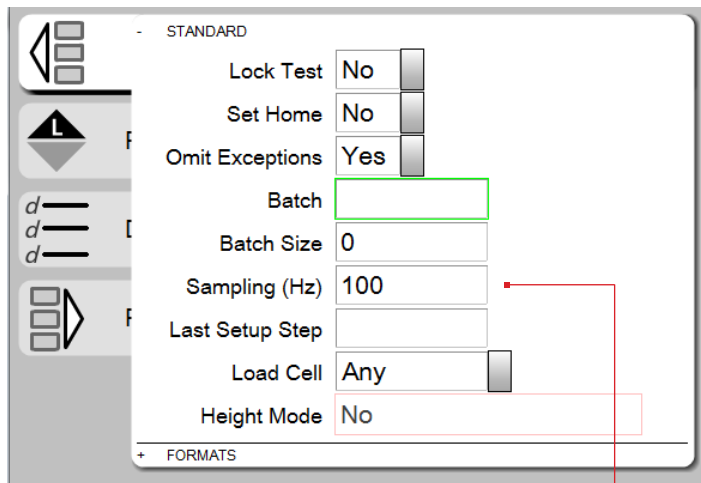
The maximum test run duration is 48 hours. This would include a cyclic test or a creep test. Therefore, the typical sampling rate for a 48 hour test is 5Hz.

6.1 Post Test Setup

The Post Test stage has functions that may be used to manage your results and data:

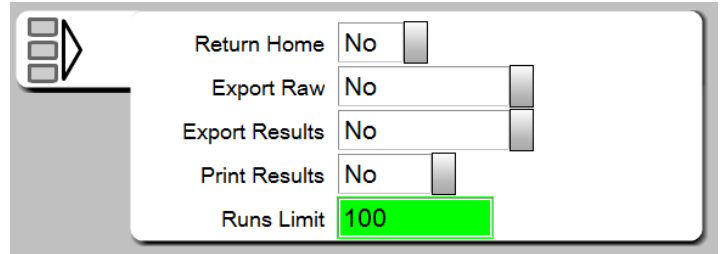
- Export Raw
- Export Results
- Print Results
- Runs Limit

The Pre Test stage also effects how data is collected. The Sampling Rate (Hz) is used to specify the frequency that data is collected during a test run. The Sampling Rate (Hz) may be set from 0.001 to 2000 Hz.



Pre Test Stage

Specify the data acquisition rate. 100 Hz is 100 data samples per second.



Post Test Stage

6.1.1 Export Raw Data

The Export Raw option lets you specify how your raw data for a test run is saved. You have the following options:

- No
- Overwrite
- Auto Number

When Export Raw = No, data is not exported to the Exports sub-directory. No .csv file of your raw data for a test run is saved.

When Export Raw = Overwrite, a .csv file is created for each test run. The .csv file has a row based on the Sampling Rate that was setup in Pre Test for this test setup. "Overwrite" means that the current .csv file for this test is over-written with new data at the completion of each test run, e.g. there is only one (1) .csv file for this test.

The .csv file is named [Test Name]_RawData and is saved to the Metlogix/Exports directory.

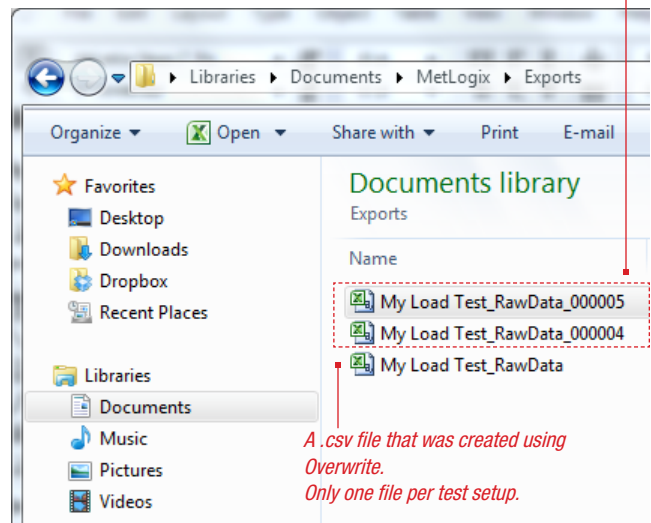


NOTE

When Overwrite is selected, there is always only one (1) .csv file for the test setup. At the completion of a test run, the data from the previous run is replaced by the new data.

A .csv file that was created using Auto Number.

A new .csv file is created for each test run. Shown are files for test run #4 and #5.



A .csv file that was created using Overwrite. Only one file per test setup.

Metlogix/Exports Directory
Default location for exported raw data

When Export Raw = Auto Number, a new .csv file is created at the completion of each test run. If there were ten (10) test runs, there would be ten (10) .csv files, e.g. one .csv file for each test run.

The .csv naming convention is [Test Name]_RawData[Run Number].



NOTE

When Auto Number is selected, a .csv file is created for each test run within the batch.

My Load Test

	Pre Test	(1)
	Pull	D _{lim} = 10.000 mm S = 100.000 mm/min (2)
	Data	(3)

	Return Home	No	<input type="checkbox"/>
	Export Raw	No	<input type="checkbox"/>
	Export Results	No	<input type="checkbox"/>
	Print Results	No	<input type="checkbox"/>
	Runs Limit	100	<input type="checkbox"/>

	Return Home	No	<input type="checkbox"/>
	Export Raw	Overwrite	<input type="checkbox"/>
	Export Results	No	<input type="checkbox"/>
	Print Results	No	<input type="checkbox"/>
	Runs Limit	100	<input type="checkbox"/>

	Return Home	No	<input type="checkbox"/>
	Export Raw	Auto number	<input type="checkbox"/>
	Export Results	No	<input type="checkbox"/>
	Print Results	No	<input type="checkbox"/>
	Runs Limit	100	<input type="checkbox"/>

Export Raw options

6.1.2 Export Results

The Export Results option is used when you want to create a .csv file of only the results (coefficients) measured and reported in each test run. When using Export Results, you have the following options:

- No
- Overwrite
- Auto Number
- Append

When Export Results = No, results are not exported to the Exports sub-directory. No .csv file of your results for a test run is saved.

When Export Results = Overwrite, a .csv file is created for each test run. The .csv file has a row containing the results. “Overwrite” means that the current .csv file for this test is over-written with new results at the completion of each test run, e.g. there is only one (1) .csv file for this test.

The .csv file is named [Test Name]_Results and is saved to the Metlogix/Exports directory.



NOTE

When Overwrite is selected, there is always only one (1) .csv file for the test setup. At the completion of a test run, the data from the previous run is replaced by the new data.

When Export Results = Auto Number, a new .csv file is created at the completion of each test run. If there were ten (10) test runs, there would be ten (10) .csv files, e.g. one .csv file for each test run.

The .csv naming convention is [Test Name]_Results[Run Number].



NOTE

When Auto Number is selected, a .csv file is created for each test run within the batch.

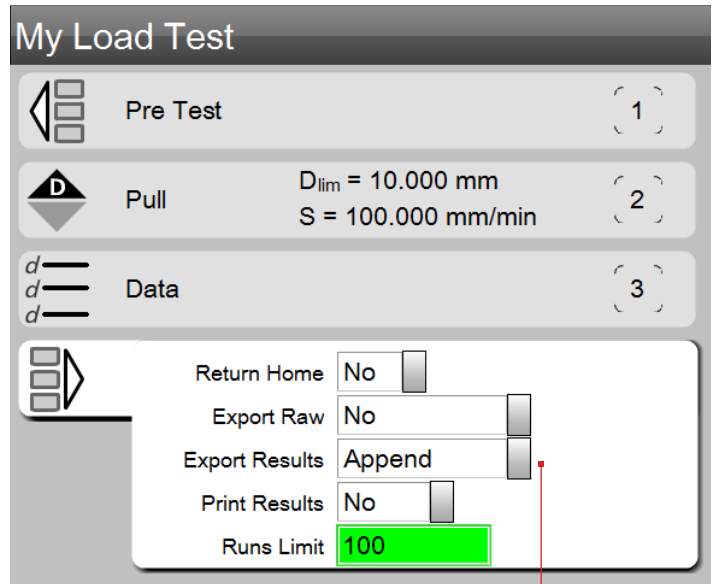
When Export Results = Append, a .csv file is created at the completion of the first test run with the results displayed on a single row. If there were ten (10) test runs, there would be ten (10) rows, e.g. one .csv file with a row added at the completion of each test run.

The .csv naming convention is [Test Name]_Results.



NOTE

When Append is selected, a .csv file is created for the test with a unique row for each test run within the batch.



*Post Test Stage
Setting Export Results to Append option*

When APPEND is selected, there is a single .csv file for the test setup. Each test run reports its results to this .csv file. Results occupy a row on the file for each test run. Selecting APPEND will add a new row with the results from the just complete test run. All previous test runs have their result on a row within the file.

6.2 File Locations

The Metlogix directory is the primary and default location for all files associated with your L2 Plus system.

The Metlogix directory is created when you launch your L2 Plus for the first time.

6.2.1 Metlogix Directory

The Metlogix directory is the root for your L2 Plus System. There are two sub-directories associated with data and results:

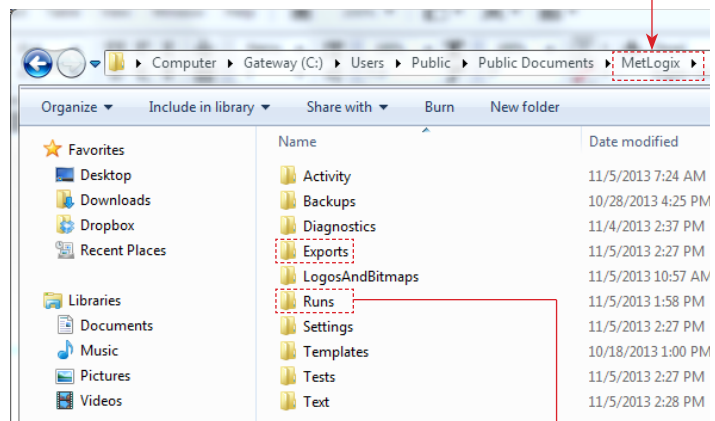
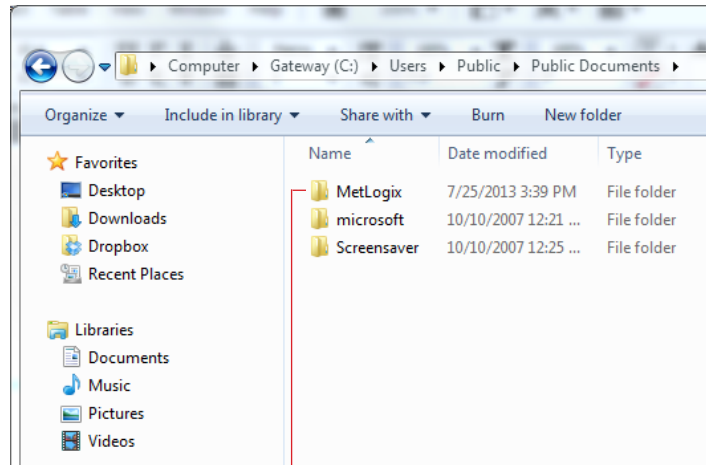
- Runs
- Exports

6.2.2 Runs Directory

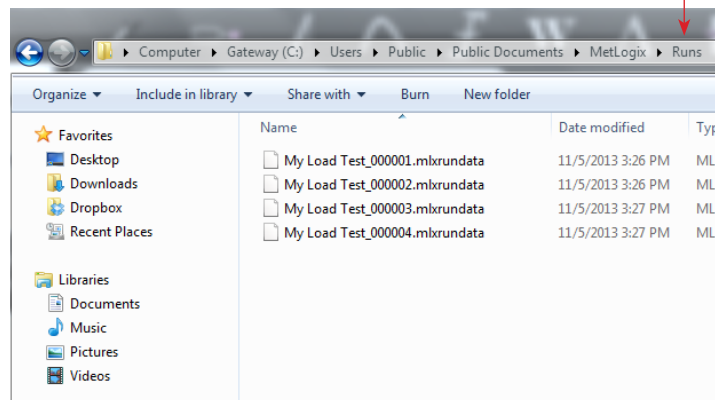
The Runs Directory stores individual files for each test run. These Run files, when supplied with the Test file, may be analyzed by another user on another L2 Plus System. The other user must copy the Test file into their Tests directory and then copy all of the Run files into their Runs directory. When they open the test, each of the test runs will be listed in the Runs List.

Run files are saved as [Test Name]_[Run Number].mlxrundata.

Using Settings-File Locations, you have the ability to map your Runs files to another location other than the Exports directory. For example, you can map your Run files to a network server or to a secondary hard disk device connected via USB to your L2 Plus workstation, or to another directory accessible by another L2 Plus System.



*Metlogix Directory
Shown are sub-directories within Metlogix*



*Runs Directory
Stored individual test run files*

6.2.3 Archive Directory

The Archive directory is an “overflow” location for your test runs. When a test has exceeded its specified Runs Limit (Post Test option), the oldest run within the Runs List is automatically saved to the Archive directory.

Using the Import Run function, you may import a test run from the Archive directory and compare that run with the run(s) within your current and active test setup. This can be useful for benchmarking a historical run from the Archive directory to a current run.



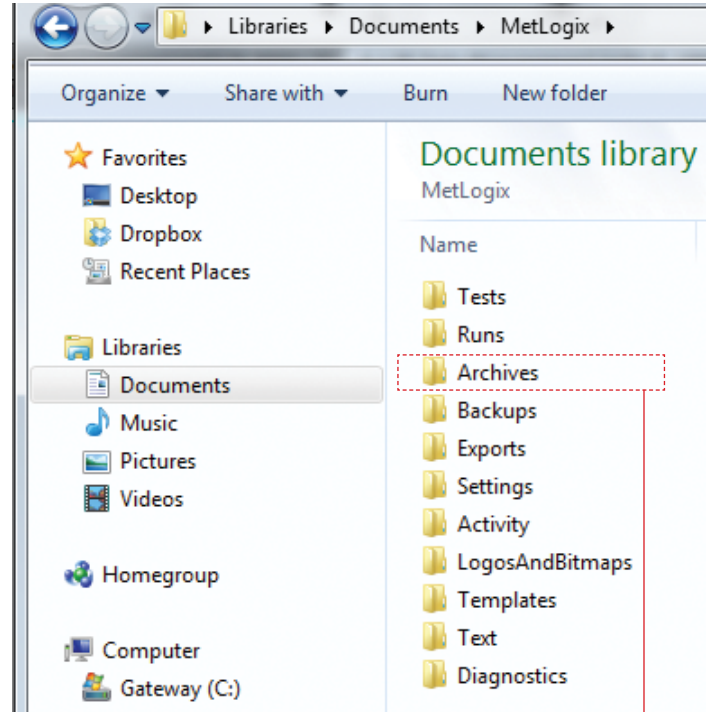
NOTE
You may import any run from the Archive directory, even a run from a different test.



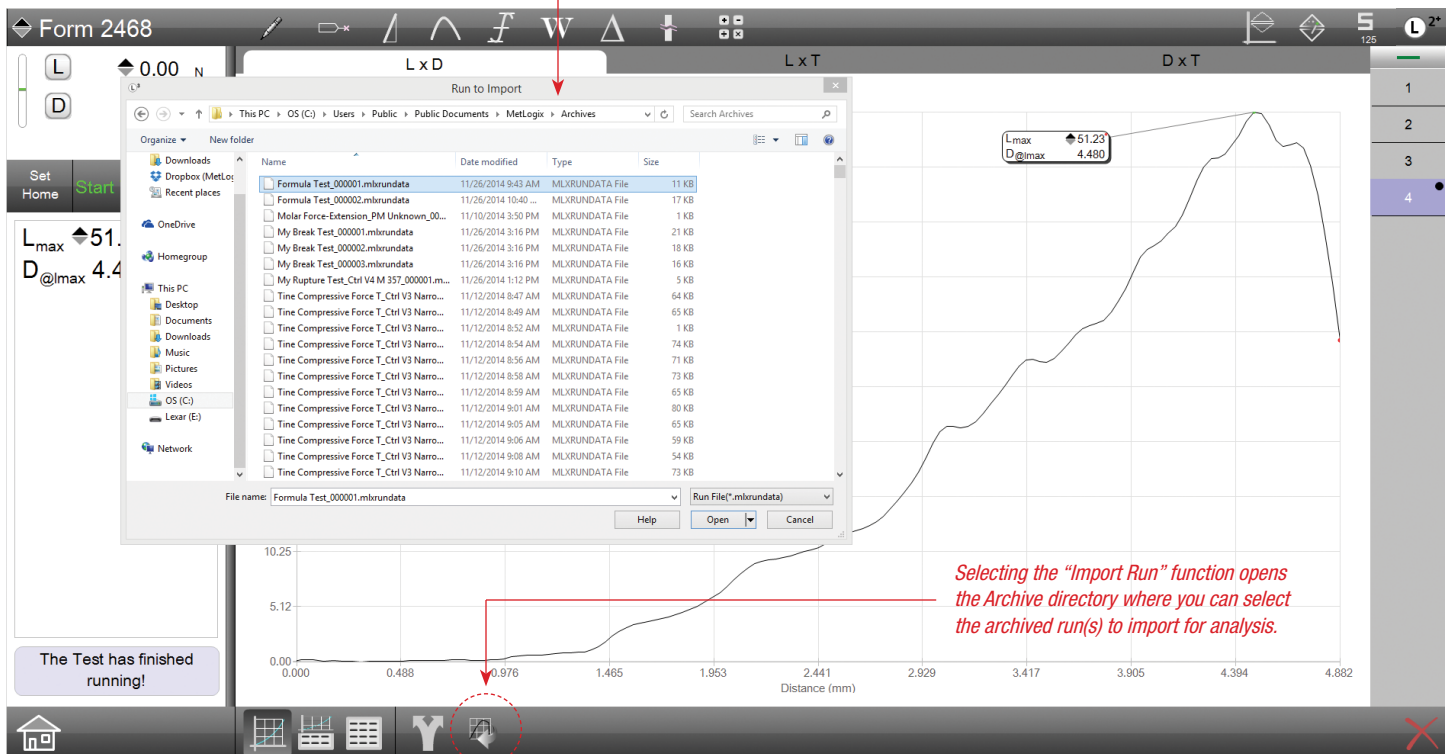
NOTE
Use the Multi-Run function when comparing an imported run with a current run.



NOTE
An imported archived run is displayed with a prefix “T”.

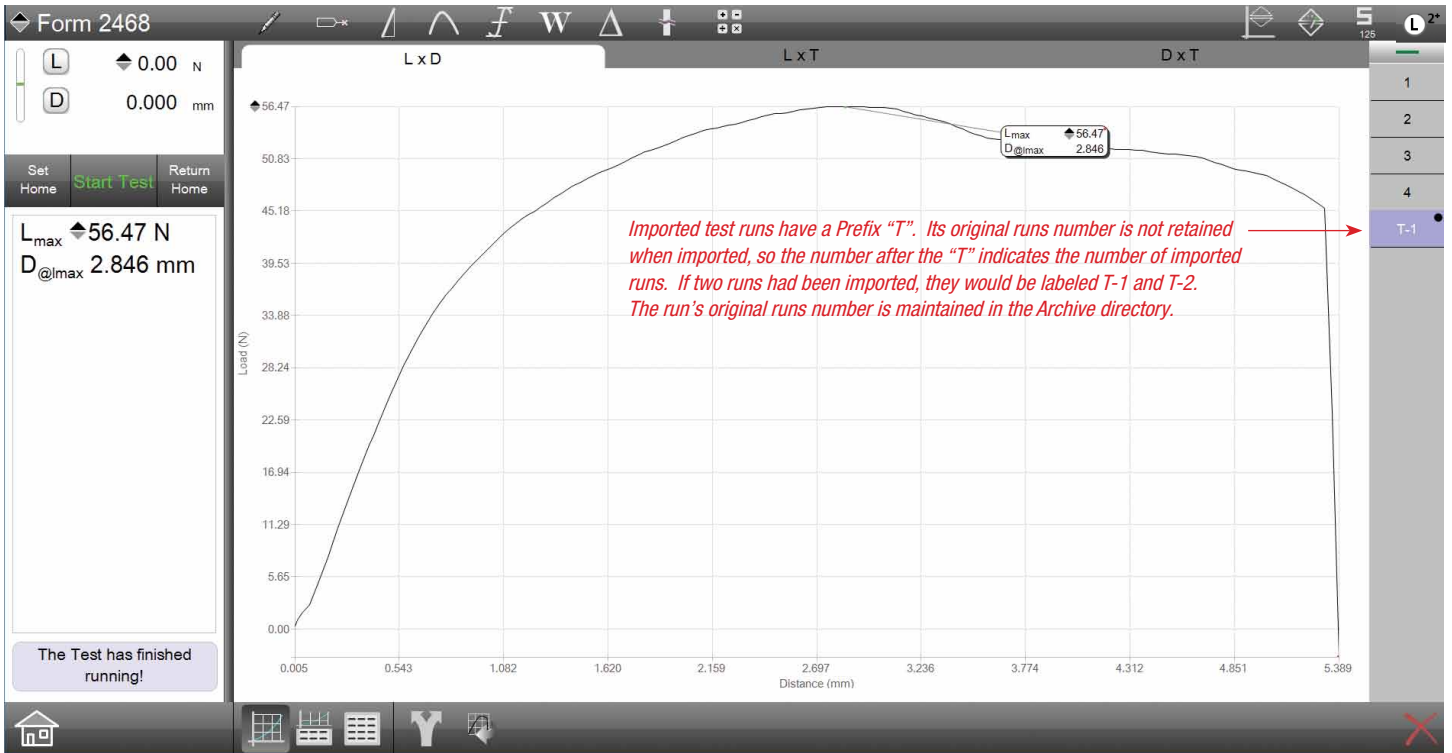


Metlogix Directory

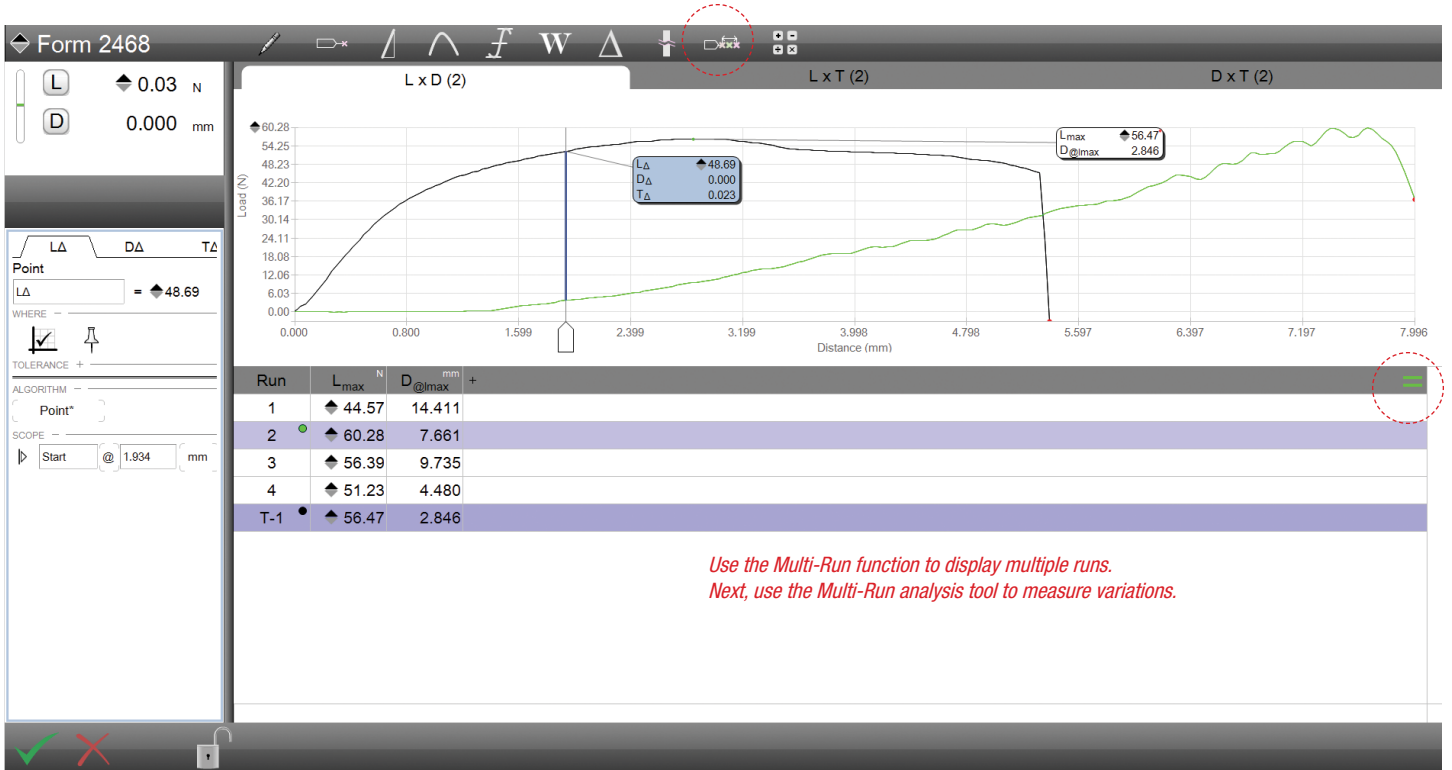


Archive Directory

Stores individual test run files once Runs Limit is exceeded within a test



Full Graph view
Shows one (1) imported run for comparison to active runs



Active and Imported Run from Archive Directory
Measure using Multi-run Tool

6.2.3 Exports Directory

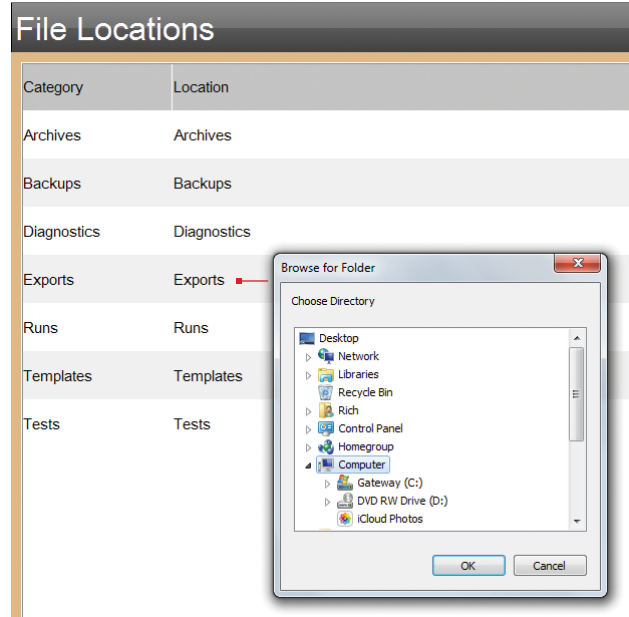
The Exports directory is where all exported .csv files are saved to by default. Raw data files and result files are saved to the Exports directory either automatically at the completion of a test run, or on-demand when the operator selects the Share function.

Using Settings-File Locations, you have the ability to map your .csv files to another location other than the Exports directory. For example, you can map your .csv files to a network server or to a secondary hard disk device connected via USB to your L2 Plus workstation.



NOTE

Exported .csv files are saved to the default Exports directory. You may change where your exported files are saved using the File Locations Setting.



File Locations Setting
Map files to other directories besides the Metlogix directory

6.3 Exporting Data and Results

Data and results may be exported automatically or on-demand using the Share function.

My Load Test

L: 0.03 N
D: 0.000 mm

Set Home **Start Test** Return Home

L_{Pt} 10.00 N
D_{Pt} 3.438 mm

The Test has finished running!

L x D

Graph: Load (N) vs. Displacement (mm)

Run	L _{Pt} N	D _{Pt} mm
1	10.00	6.048
2	10.00	3.675
3	10.00	2.384
4	10.00	3.438

Export Results .csv

Export Results to Clipboard for copying into Word, etc.

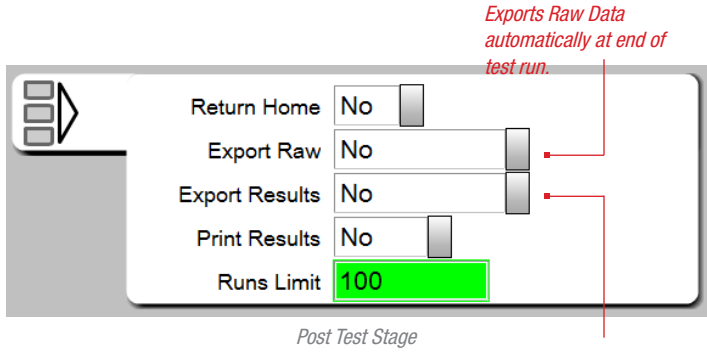
Export .bmp image of graph

Export Raw Data .csv

Share Function
Exports files on-demand

6.3.1 Automatic Export

Data and Result files may be exported automatically by configuring the Post Test options for your test setup. When Export Raw or Export Results are set to any option other than No, export files are exported automatically to the designated file location.



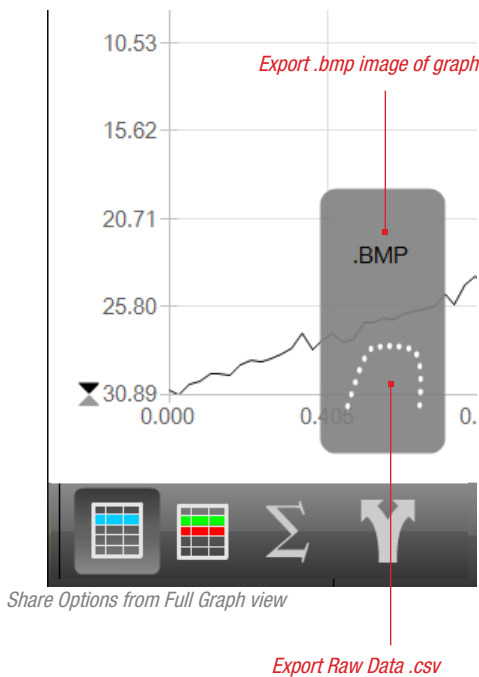
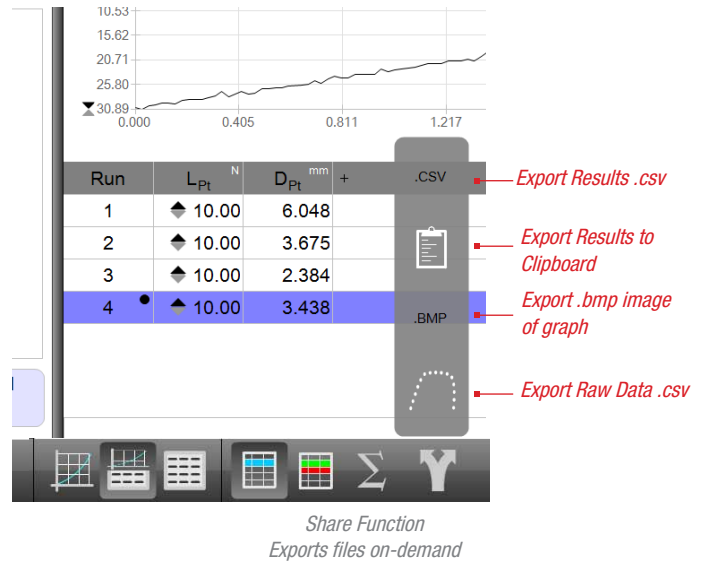
6.3.2 On-Demand Export (Share)

The Share function appears on the footer of the views used to display your graphs or data tables. Selecting the Share function will display an option menu. The menu options will change based on the view you are looking at. If you are looking at a full graph view, the options on the menu are:

- Export Image
- Export Raw Data

If you are viewing one of the data view displays, the options are:

- Export Results
- Export to Clipboard
- Export Image
- Export Raw Data



6.3.2.1 Export Results

Selecting the Share + .csv target will export the results from the currently displayed data table, e.g. for a single test run. The export is identical to exporting as a “Overwrite Export” had you used the Post Test Export Results option.

6.3.2.2 Export to Clipboard

The Export to Clipboard function is similar to a traditional “cut & paste” routine. When the clipboard symbol is selected, the highlighted rows from the data table is copied to the clipboard where it can be pasted into a Microsoft Word or Excel document.

The Export to Clipboard is available on views with a data table only. The clipboard cannot be used to copy and paste an image, e.g. graph trace.



NOTE

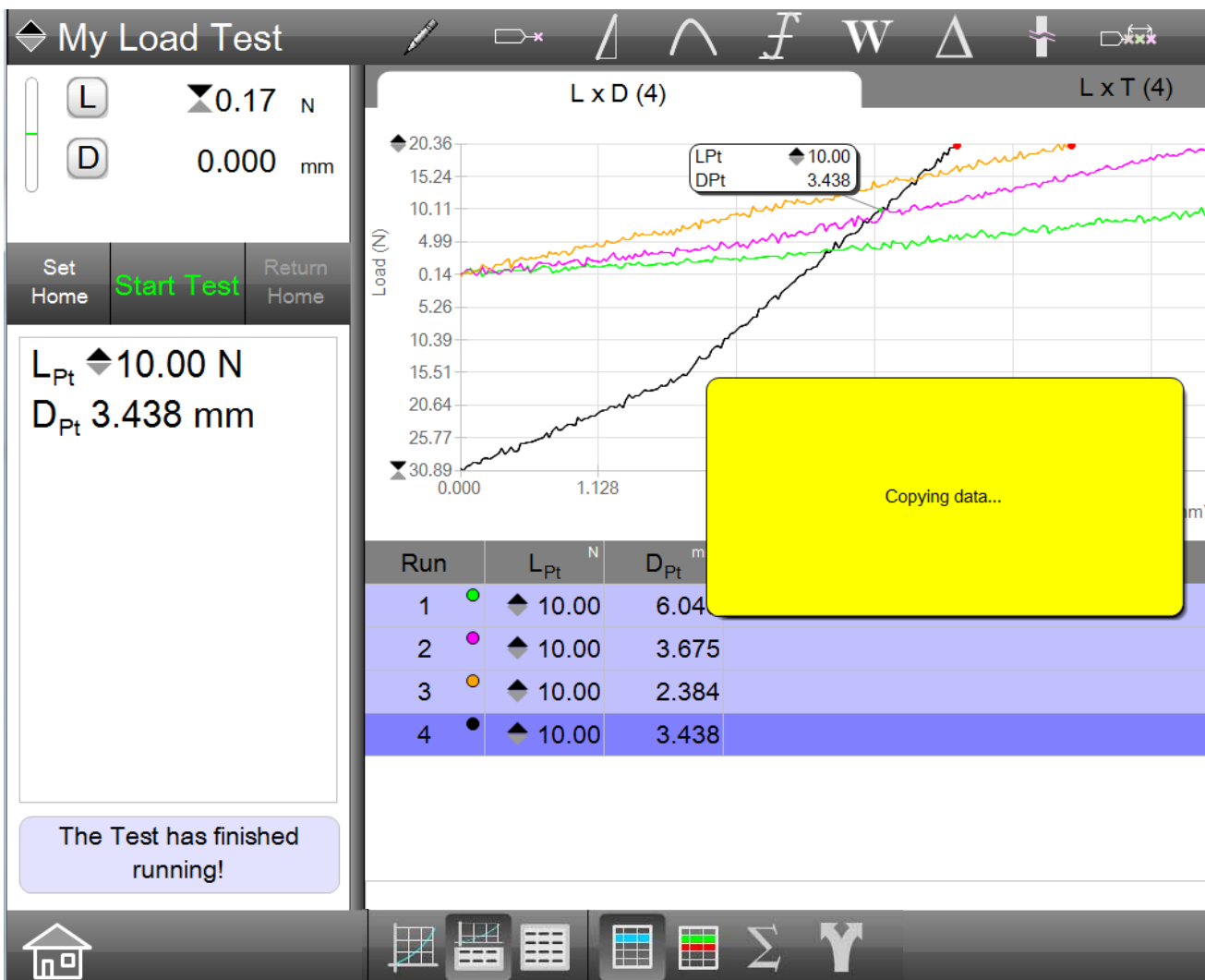
The Export to Clipboard function is available with views having a data table. It exports the table data only.

6.3.2.3 Export Image

The Export Image function is used when you want to create and copy an image of your graph from a test run. The image is saved as a .bmp and is used as a clipboard image. The image can be pasted into Microsoft Word or Excel.

6.3.2.4 Export Raw Data

Selecting the Share + Raw Data target will export the raw data points from the currently displayed data table or from the graph, e.g. for a single test run. The export is identical to exporting as a “Overwrite Export” had you used the Post Test Export Raw option.



Share Function
Copy message displays when data is copied to clipboard

6.4 Printouts

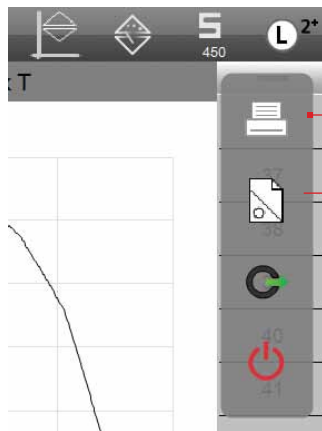
Reports may be printed out from the display view. Reports are associated with the current view being displayed.

From Display View	Prints this report type
Full Graph view	Graph Report
Split Graph - Data view	Run Report (Graph and Run Data)
Split Graph - Data view with Statistics	Statistics Report
Data view	Batch Report
Data view with Statistics	Statistics Report
Data view with Tolerance	Tolerance Report

Printout Formats

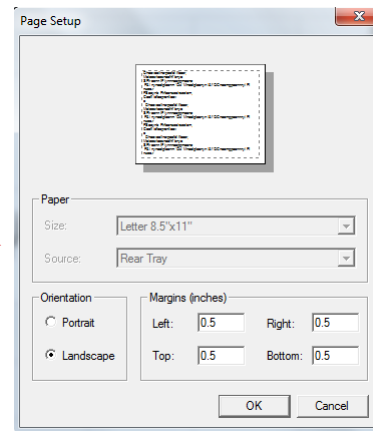
Print reports by selecting the Printer symbol from the main menu.

Report layouts print landscape. You may change to a portrait layout by selecting the Page Format symbol from the L2 Plus main menu.



Main System Menu

Execute a printout or change the page layout settings



Page Layout dialog

6.4.1 Standard Reports

Your L2 Plus system provides a set of common report formats. These are described in the following sections.

User may also use the .csv files to create more complex reports using Microsoft Word, Excel and Access.

6.4.1.1 Graph Report

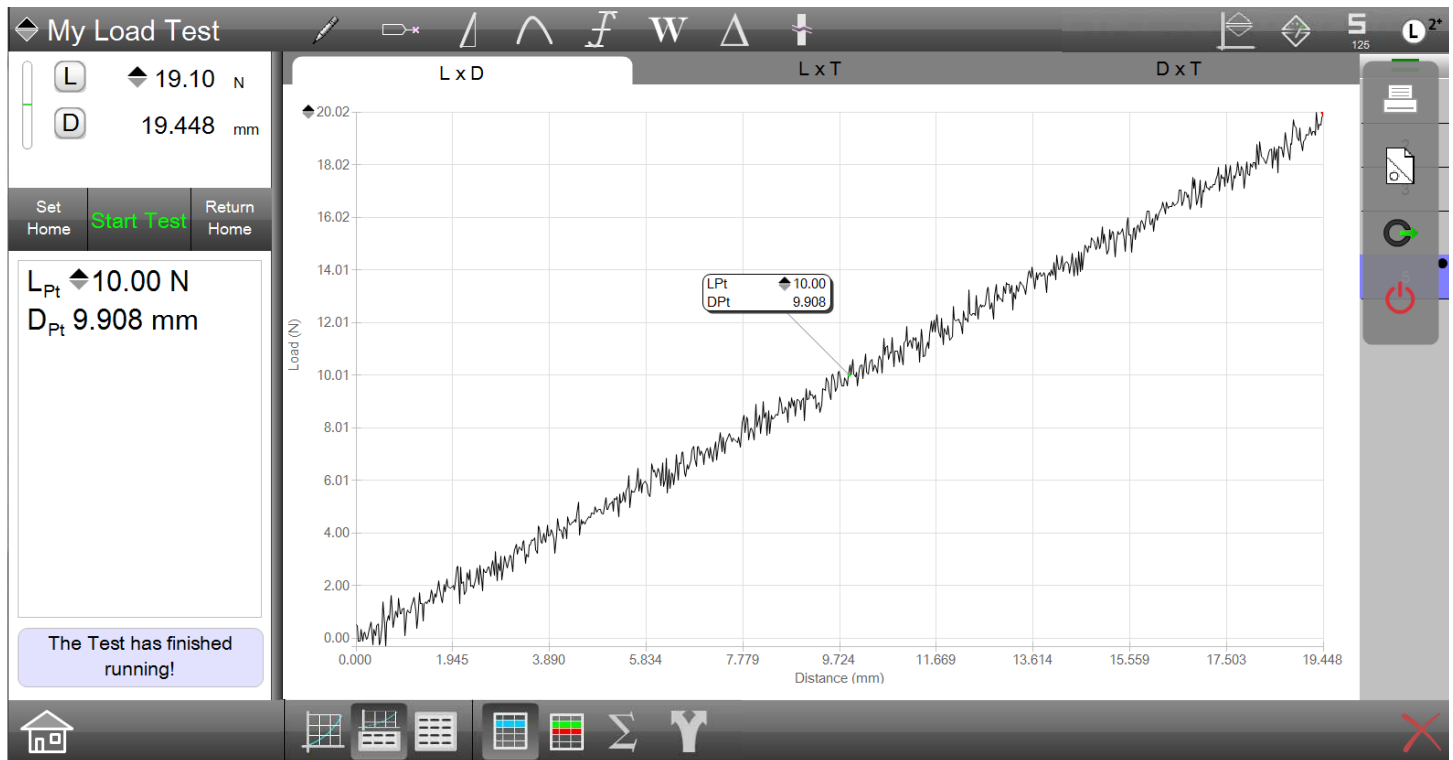
The Graph report prints from the full graph view. The Graph report prints the full graph with the result markers - WYSIWYG (What You See Is What You Get).

You may print the Graph report with multiple graph traces using the Multi-run function, however, the only markers that are displayed are for the “active” test run. The “active” test run always displays with a black trace line.

Graphs may print with grid lines or without.

Graphs may include selected coefficients when you add a coefficient into any of the Custom Text entry boxes in Printout Settings. Coefficients can be printed in the header boxes or in the single footer box.

To print a coefficient on a graph report, enter the coefficient label into the Custom Text entry box using the Printout Settings from the main Settings.



Print Full Graph Report

Printouts

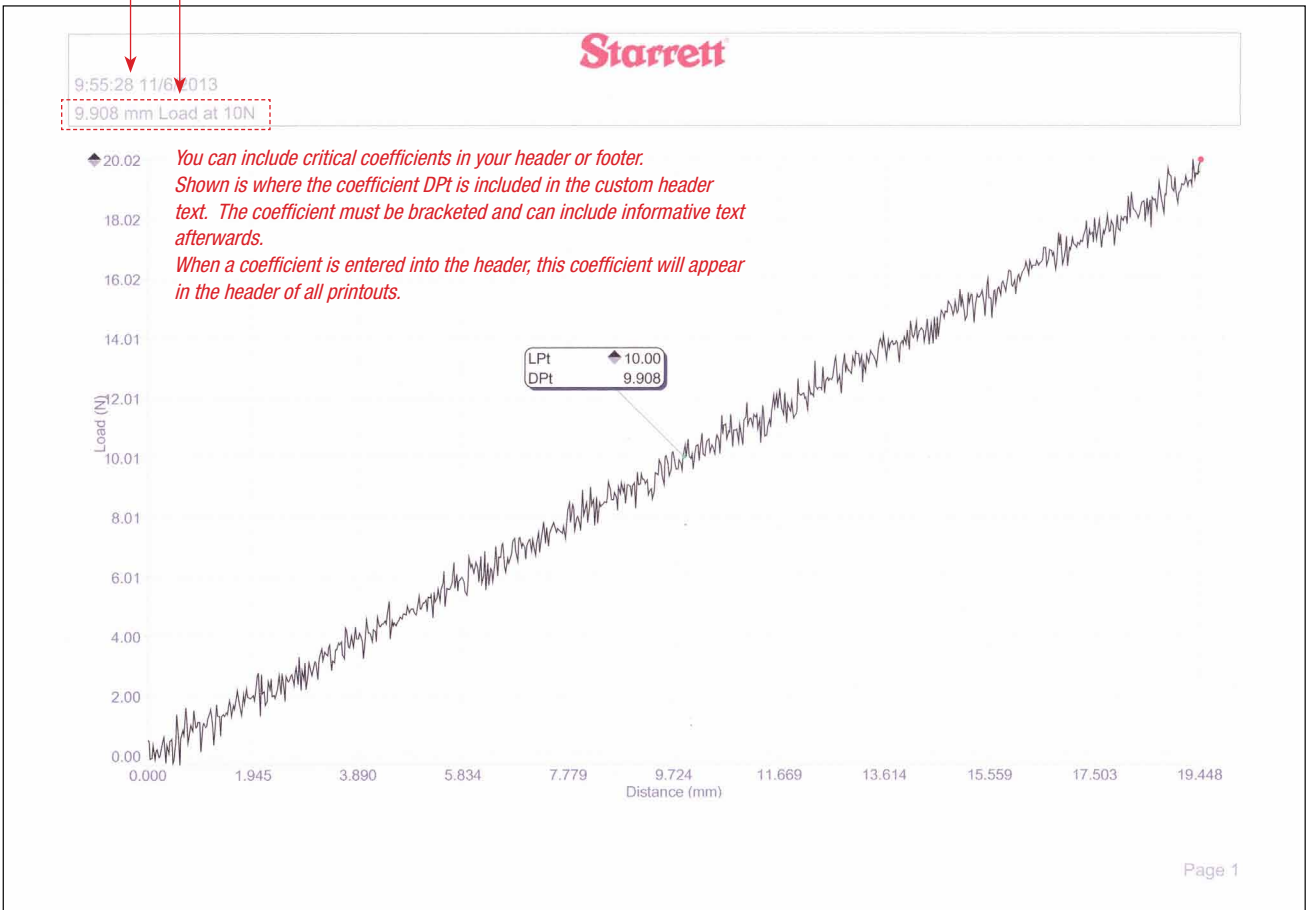
L2

Print report header	<input type="checkbox"/> Yes
Print column headers	<input type="checkbox"/> Yes
Print grid lines	<input type="checkbox"/> Yes
Print bitmap in header	<input type="checkbox"/> Center
Print bitmap in footer	<input type="checkbox"/> No
Print user name in header	<input type="checkbox"/> No
Print date/time in header	<input type="checkbox"/> Left
Print page number in footer	<input type="checkbox"/> Yes
Print custom text in header	<input type="text" value="DPI Load at 10N"/>
Print custom text in header	<input type="text"/>
Print custom text in header	<input type="text"/>
Print custom text in footer	<input type="text"/>

Graph .bmp is printed with grid lines.
Graph .bmp is printed in the center of the printout. Other options are justified left or right.

Done

Printout Settings
Use to set global printout formatting and common general information, e.g. User, Date/Time, Page Numbers, etc.



You can include critical coefficients in your header or footer. Shown is where the coefficient DPt is included in the custom header text. The coefficient must be bracketed and can include informative text afterwards. When a coefficient is entered into the header, this coefficient will appear in the header of all printouts.

Page 1

Print Full Graph Report
Report shows a specific coefficient (DPt) in the printout header

6.4.1.2 Run Report

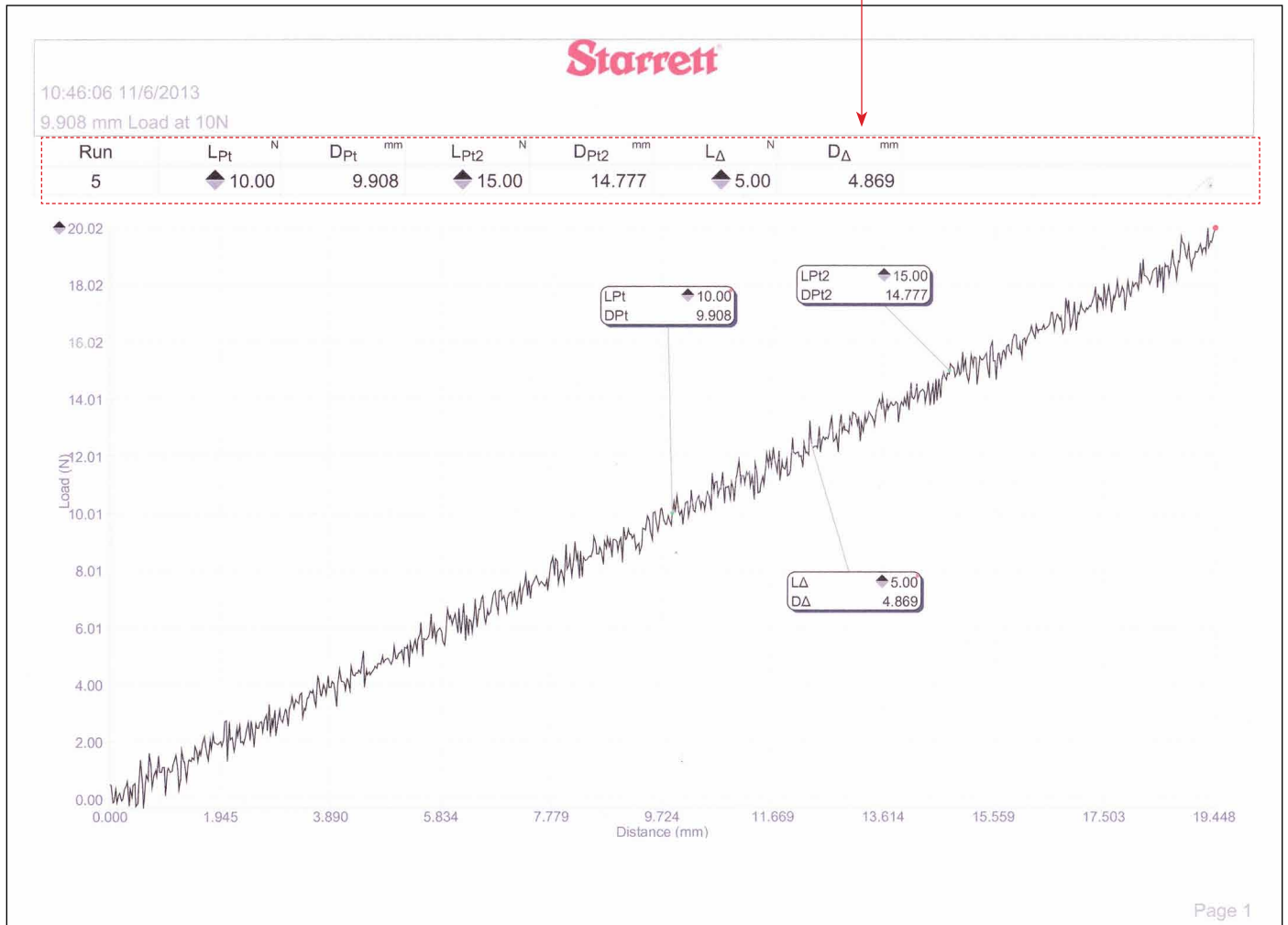
The Run report is printed from the split Graph-Data view.

Select the test run from the table and the associated graph trace is displayed.

Select the Print symbol from the Main System Menu.

The Run table data is printed at the top of the graph image.

*The test runs' data results are displayed above the graph image and below the header information.
If there are many coefficients, the additional coefficients will print on a separate page.*



*Print Run Report
Report shows Run #5, its coefficients and the graph with markers*

6.4.1.3 Batch Report

The Batch report is printed from the full Data view. The full Data view displays all test runs and their coefficients in a table. Test runs are identified, which each test runs displaying on a row.

My Load Test
125
L 2*

L 0.40 N

D 0.000 mm

Run	L _{Pt} N	D _{Pt} mm	L _{Pt2} N	D _{Pt2} mm	L _{avg} N
1	10.00	0.040	15.00	0.059	11.42
2	10.00	0.039	15.00	0.057	12.14
3	10.00	0.038	15.00	0.059	11.91
4	10.00	0.037	15.00	0.059	11.96

Set Home
Start Test
Return Home

L_{Pt} 10.00 N

D_{Pt} 0.037 mm

L_{Pt2} 15.00 N

D_{Pt2} 0.059 mm

L_{avg} 11.96 N

The Test has finished running!

X
X

Starrett

JSmith2013
15:32:55 11/6/2013
Lab ID: 2056-FL
Sample: Composite Filament Spec 489XN-00012

Run	L _{Pt} N	D _{Pt} mm	L _{Pt2} N	D _{Pt2} mm	L _{avg} N
1	10.00	0.040	15.00	0.059	11.42
2	10.00	0.039	15.00	0.057	12.14
3	10.00	0.038	15.00	0.059	11.91
4	10.00	0.037	15.00	0.059	11.96

Page 1

Print Batch Report
Use Multi-Run function and report all test runs

6.4.1.4 Statistics Report

The Statistics report prints from the full Data view or from the split Graph-Data view. Statistics are not displayed, nor can a Statistics report print when using tolerances. You must use the Tolerance report for printing tolerance information and result.

My Load Test
S 125 L 2*

L 0.58 N

D 0.000 mm

Run	L _{Pt} N	D _{Pt} mm	L _{Pt2} N	D _{Pt2} mm	L _{avg} N +
1	10.00	0.040	15.00	0.059	11.42
2	10.00	0.039	15.00	0.057	12.14
3	10.00	0.038	15.00	0.059	11.91
4	10.00	0.037	15.00	0.059	11.96

Set Home Start Test Return Home

L_{Pt} 10.00 N

D_{Pt} 0.037 mm

L_{Pt2} 15.00 N

D_{Pt2} 0.059 mm

L_{avg} 11.96 N

The Test has finished running!

Max	10.00	0.040	15.00	0.059	12.14
Min	10.00	0.037	15.00	0.057	11.42
Range	0.00	0.003	0.00	0.002	0.72
Average	10.00	0.039	15.00	0.059	11.86
Std Dev	0.00	0.001	0.00	0.001	0.31
6 Sigma	0.00	0.008	0.00	0.006	1.85

Starrett

JSmith2013
15:32:55 11/6/2013
Lab ID: 2056-FL
Sample: Composite Filament Spec 489XN-00012

Run	L _{Pt} N	D _{Pt} mm	L _{Pt2} N	D _{Pt2} mm	L _{avg} N
1	10.00	0.040	15.00	0.059	11.42
2	10.00	0.039	15.00	0.057	12.14
3	10.00	0.038	15.00	0.059	11.91
4	10.00	0.037	15.00	0.059	11.96
Max	10.00	0.040	15.00	0.059	12.14
Min	10.00	0.037	15.00	0.057	11.42
Range	0.00	0.003	0.00	0.002	0.72
Average	10.00	0.039	15.00	0.059	11.86
Std Dev	0.00	0.001	0.00	0.001	0.31
6 Sigma	0.00	0.008	0.00	0.006	1.85

Page 1

Print Batch Report

Use Multi-Run function and report all test runs with statistics

6.4.1.5 Tolerance Report

When tolerances are used, you may print a Tolerance report from any Data view, e.g. full or split graph-data.

The Tolerance reports will print in a WYSIWYG format.

You cannot print a report with both tolerances and statistics.

My Load Test
S 125 L 2*

L 0.29 N

D 0.000 mm

Set Home Start Test Return Home

L_{Pt} 10.00 N

D_{Pt} 0.037 mm

L_{Pt2} 15.00 N

D_{Pt2} 0.059 mm

L_{avg} 11.96 N

The Test has finished running!

Run	Coef	Units	Actual	Limit 1	Limit 2	Deviation	P/F	Comment
1	LPt	N	10.00					
1	DPt	mm	0.040					
1	LPt2	N	15.00					
1	DPt2	mm	0.059					
1	Lavg	N	11.42	11.50	12.50		Fail	
2	LPt	N	10.00					
2	DPt	mm	0.039					
2	LPt2	N	15.00					
2	DPt2	mm	0.057					
2	Lavg	N	12.14	11.50	12.50		Pass	
3	LPt	N	10.00					
3	DPt	mm	0.038					
3	LPt2	N	15.00					
3	DPt2	mm	0.059					
3	Lavg	N	11.91	11.50	12.50		Pass	
4	LPt	N	10.00					
4	DPt	mm	0.037					
4	LPt2	N	15.00					

Starrett

JSmith2013
15:48:38 11/6/2013
Lab ID: 2056-FL
Sample: Composite Filament Spec 489XN-00012

Run	Coef	Units	Actual	Limit 1	Limit 2	Deviation	P/F	Comment
1	LPt	N	10.00					
1	DPt	mm	0.040					
1	LPt2	N	15.00					
1	DPt2	mm	0.059					
1	Lavg	N	11.42	11.50	12.50		Fail	
2	LPt	N	10.00					
2	DPt	mm	0.039					
2	LPt2	N	15.00					
2	DPt2	mm	0.057					
2	Lavg	N	12.14	11.50	12.50		Pass	
3	LPt	N	10.00					
3	DPt	mm	0.038					
3	LPt2	N	15.00					
3	DPt2	mm	0.059					
3	Lavg	N	11.91	11.50	12.50		Pass	
4	LPt	N	10.00					
4	DPt	mm	0.037					
4	LPt2	N	15.00					
4	DPt2	mm	0.059					
4	Lavg	N	11.96	11.50	12.50		Pass	

Page 1

Print Tolerance Report
Use Multi-Run function and report all test runs with tolerance

6.4.2 Automatic Printouts

You may print reports automatically by specifying the Print Results option in the test setup's Post Test stage.

The default for Print Results = No. No report is printed at the completion of a test run.

If you specify Print Results = Graph, a Graph report is printed at the completion of a test run.

If you are displaying a full graph at the completion of your runs, a full Graph report will print.

If you are displaying a split Graph-Data view, a Run report will print at the completion of your test runs.

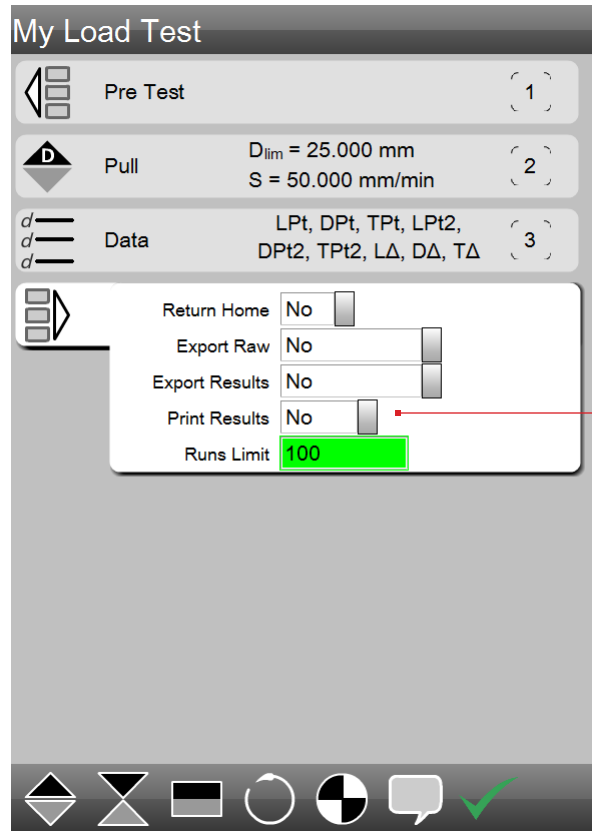
If you specify Print Results = Data, a Batch Report is printed. This result table for the selected test run. If statistics or the tolerance view is used, the associated statistics or tolerance report will print.

If you specify Print Results = Both, a Run Report is printed. This will include the graph and the result table for the selected test run.

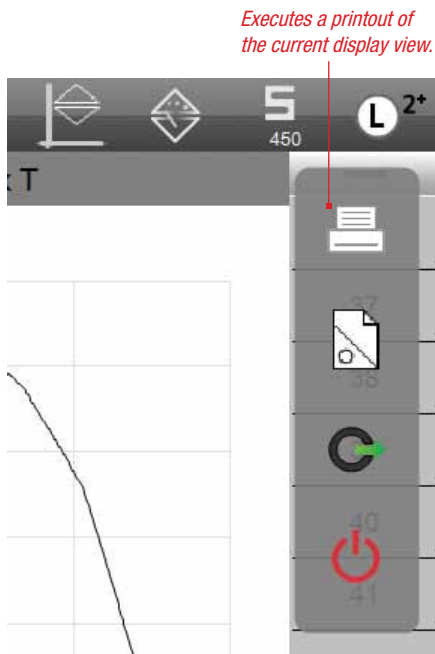
6.4.3 On-Demand Printouts

On-demand printouts use the Print symbol from the Main System Menu. While at the display view of your result, select the Print symbol.

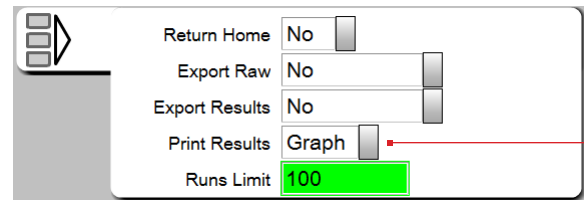
The report associated with that view will print.



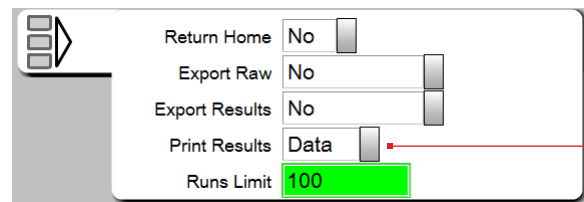
*Post Test Stage Setup
Print Results = No. No automatic printout at completion of a run*



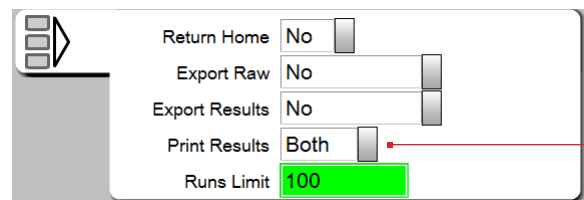
*Main System Menu
Execute a printout or change the page layout settings*



*Post Test Stage Setup
Print Results = Graph Prints Graph Report at completion of a test run*



*Post Test Stage Setup
Print Results = Data Prints Batch Report at completion of a test run*



*Post Test Stage Setup
Print Results = Both Prints Run Report at completion of a test run*

6.4.4 Printout Settings

The Printout Setting is used to globally format your printouts. All printouts will use these settings options on all printouts.

6.4.4.1 Print Report Header

You may specify that all printouts output with a header when this option = Yes. All reports will print with a header.

If this option = No, all reports will print without a header.

When the Print Header option = No, the Print Custom Text in Header options will not print even if you have enter information in the Settings.

6.4.4.2 Print Column Headers

Print Column Headers refers to the column labels used in your Data views. These labels are generally the name used to distinguish your results (coefficients). A Column Header example would be LPT.

If Print Column Headers = Yes, all reports using the data view information will print with these headers.

If the Print Column Headers = No, reports using the data view information will print row information without the column labels.

6.4.4.3 Print Grid lines

Graphs are displayed with grid lines. When you print a report that uses the graph image, you have the option to print with or without the grid lines.

If Print Grid lines = Yes, the report will print the graph image with grid lines.

If Print Grid lines = No, the report will print the graph image without grid lines. Both the y-axis and x-axis lines are printed, including their numerical values and labels.

6.4.4.4 Print Header Logo

You can setup your reports to print your company logo in the header. You first must create a .bmp file of your logo with a height no greater than 300 pixels (25 pixels is recommended). Next, you will rename your .bmp file to "Headerlogo". Then, save this file in your Metlogix/LogosAndBitmaps directory.

You can choose to print your header logo and position the logo center, left or right on your printout.

Print report header	Yes <input type="checkbox"/>
Print column headers	Yes <input type="checkbox"/>
Print grid lines	Yes <input type="checkbox"/>
Print bitmap in header	Center <input type="checkbox"/>
Print bitmap in footer	Center <input type="checkbox"/>
Print user name in header	No <input type="checkbox"/>
Print date/time in header	Left <input type="checkbox"/>
Print page number in footer	Yes <input type="checkbox"/>
Print custom text in header	<input type="text"/>
Print custom text in header	<input type="text"/>
Print custom text in header	<input type="text"/>
Print custom text in footer	<input type="text"/>

6.4.4.5 Print Footer Logo

You can setup your reports to print your company logo in the footer. You first must create a .bmp file of your logo with a height no greater than 300 pixels (25 pixels is recommended). Next, you will rename your .bmp file to "Footerlogo". Then, save this file in your Metlogix/LogosAndBitmaps directory.

You can choose to print your footer logo and position the logo center, left or right on your printout.

6.4.4.6 Print User Name in Header

When User Names are setup for your operators, you may specify that the User Name prints in the Header.

The user who is logged into the system at the time the report is printed (either print automatically or printed on-demand), has their User Name printed in the header.

The User Name may be printed in the center, left or right on the header.

6.4.4.7 Print Date/Time in Header

You may time stamp your printouts using the Print Date/Time in Header option.

The Date and Time may be printed in the center, left or right on the header. The Date and Time represent the actual date and time that the printout was executed either automatically or on-demand.

6.4.4.8 Print Page Number in Footer

You may print page numbers on your printouts using the Print Page Number in Footer option.

The Page Number may be printed in the center, left or right on the footer.

6.4.4.9 Print Custom Text in Header

There are three rows reserved in the header for printing custom text. The text may be up to 100 characters, including spaces, in length.

Additionally, you may print coefficients in any of these three rows using a bracket and the coefficient name, e.g. [LPt].



NOTE

If using a coefficient in your custom text, please note that this coefficient will always be printed on all reports. If the coefficient was reported as an out-of-range value (XXXXX), the XXXXX is printed in this location.

If any of the rows are left blank, no information is printed.

Custom text prints left-to-right.

6.4.4.10 Print Custom Text in Footer

There is a single row reserved in the footer for printing custom text. The text may be up to 100 characters, including spaces, in length.

Additionally, you may print coefficients in this rows using a bracket and the coefficient name, e.g. [LPt].



NOTE

If using a coefficient in your custom text, please note that this coefficient will always be printed on all reports. If the coefficient was reported as an out-of-range value (XXXXX), the XXXXX is printed in this location.

No information is printed when left blank.

Custom text prints left-to-right.



Corporate Headquarters

The L. S. Starrett Company
121 Crescent Street
Athol, MA 01331 USA
Tel: 978-249-3551

Starrett Metrology Division

Starrett Kinematic Engineering, Inc.
26052-103 Merit Circle
Laguna Hills, CA 92653 USA
Tel: 949-348-1213